

## SERVICE & REPAIR

---

Please call GRS® or an authorized GRS® dealer to order replacement parts and for instructions on replacement. Do not attempt to service parts that must be sent to GRS® or an authorized GRS® dealer; these must be repaired or replaced by GRS® or an authorized GRS® dealer. Servicing parts not signified as operator serviceable will void the 2-year warranty. **Any part not noted as replaceable or serviceable by the operator must be sent in to GRS® or an authorized GRS® dealer for repair.**

## ORDER REPAIR OR REPLACEMENT PARTS

---

*These parts are replaceable by the operator. Normal Wear and Tear, Abuse, Misuse, or Loss are not covered by warranty. See illustrations on page 15.*

RHMS, #8-32 x 0.25" Z/P	002-568
Tubing, PU CLR 0.250" O.D., 0.170" I.D. (Foot Throttle Hose)	004-050
Fitting, PTC 0.25" 90° M1/8" NPT	022-230
Fitting, PTC 0.25" Inline M1/8" NPT	022-231
Assembly, 5-Micron Filter and Bowl	022-944
RHMS, M4 x 0.7MM [Qty: 2]	022-978
Bracket, Filter Mount	044-051
Tubing, PU CLR 0.250" O.D., 0.130" I.D.	044-229
Allen Wrench, 1/8"	022-053
Square Point Graver	002-115
#4 QC HSS Onglette Graver	022-404
Small Steel Point [Qty: 2]	002-979
Fitting, B-1/4" I.D. TUBE M1/8" NPT	002-361
Power adapter	022-872, 022-987, 022-993
Foot Throttle (Hose 004-050 not included)	004-519

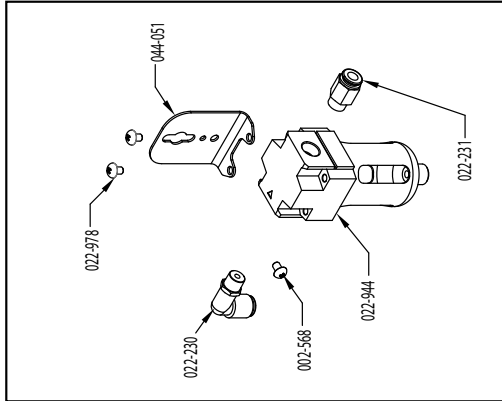
## OPERATOR SERVICEABLE PARTS

---

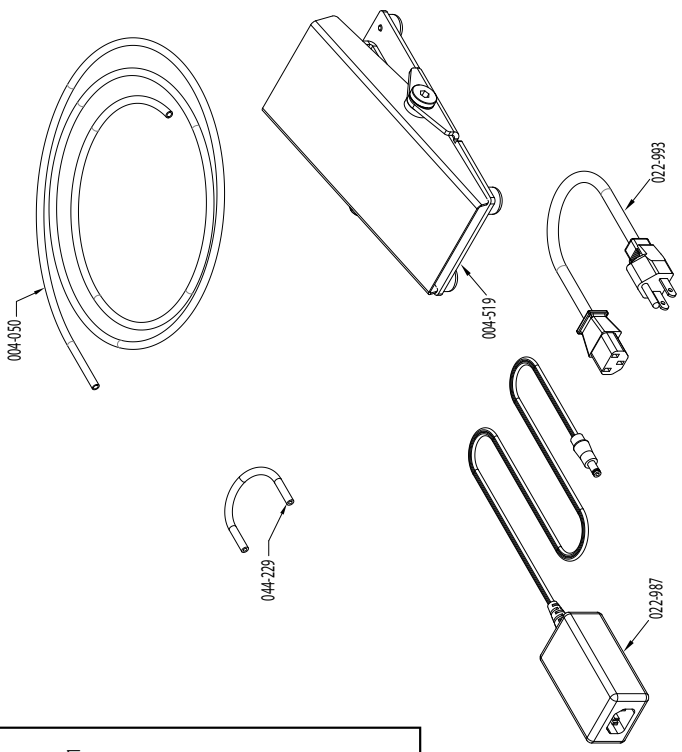
*Call GRS® or an authorized GRS® dealer for instructions and ordering information before attempting to service or replace these parts.*

GraverMax® G8 Box Parts	page 20
Motor Assembly (not Motor Valve Assembly)	page 21

# GraverMax<sup>®</sup>G8AccessoriesAccessories



Order Replacements:  
 022-860 1 BOWL & COVER REPLACEMENT  
 022-861 1 FILTER REPLACEMENT



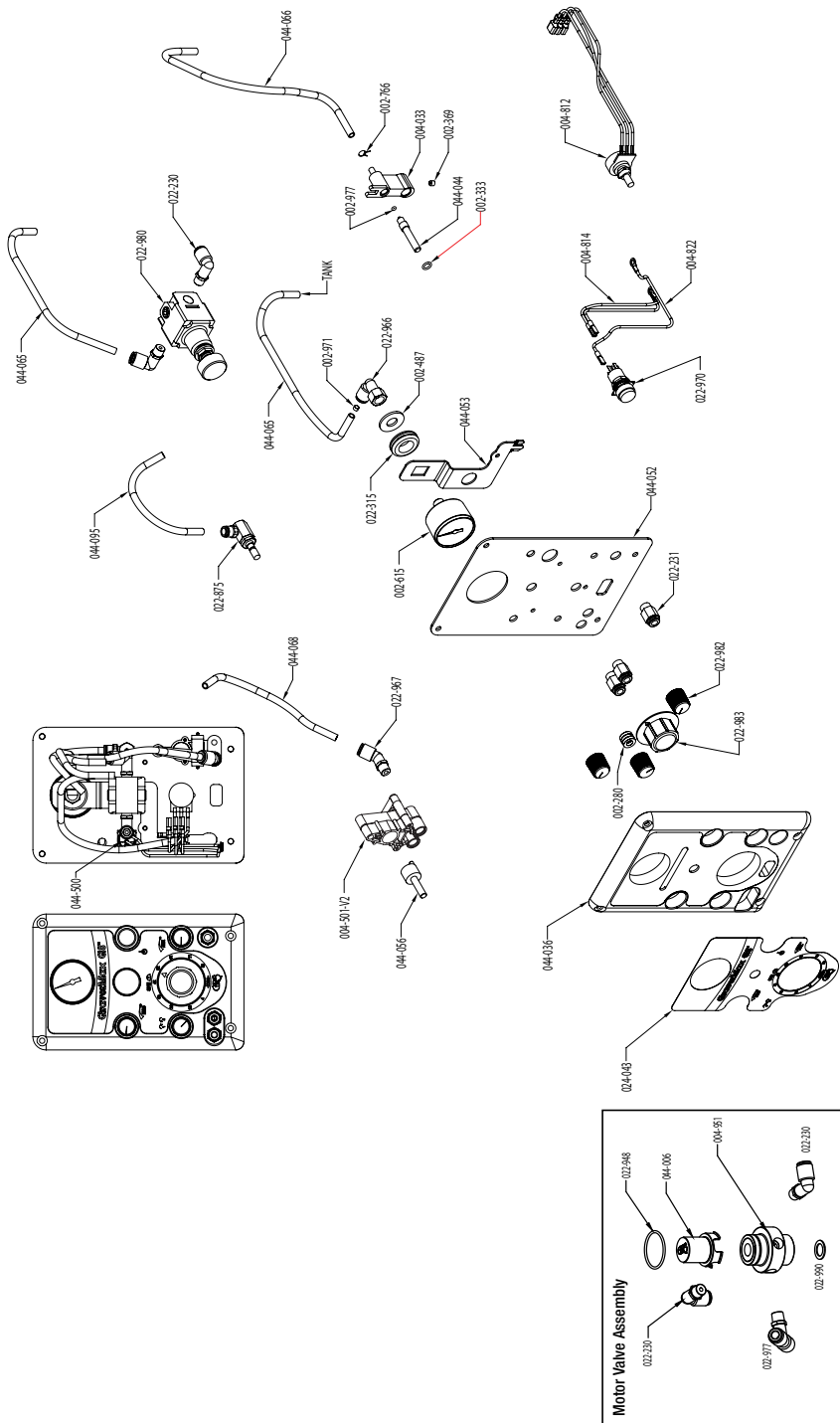
# GraverMax® G8 Front Face Plate & Motor Valve Parts ListFr

PART NO.	QTY.	DESCRIPTION	PART NO.	QTY.	DESCRIPTION
002-280	3	WASHER, 0.50" O.D. 0.25" I.D. x 0.13" NY	022-967	1	FITTING, PTC 0.25" 45° M1/8" NPT
002-333	1	O-RING, 0.313" O.D. 0.188" I.D.	022-970	1	SWITCH, ILLUMINATED POWER
002-369	1	SHSS, #10-32 x .19" BLK	022-980	1	REGULATOR, PRECISION AIR
002-487	1	WASHER, 1.0" O.D. 0.44" I.D. x 0.08" Z/P	022-982	3	KNOB, GRAY 0.75" O.D. 0.25" I.D. x 0.69"
002-615	1	GAUGE, 1.63" O.D. 0-60psi/AIR	022-983	1	KNOB, B-G 1.75" O.D. 0.25" I.D. x 0.78"
002-766	1	CLAMP, WIRE, 0.25" O.D. TUBE	024-043	1	DECAL, GraverMax®G8 FRONT
002-971	1	PLUG, 0.190" O.D. x 0.125" SINTERED	044-036	1	PLATE, FRONT COVER
002-977	1	O-RING, 0.188" O.D. 0.063" I.D.	044-044	1	NEEDLE, VALVE
004-033	1	VALVE BODY	044-052	1	PLATE, FRONT FRAME
004-501-V2	1	VALVE, 2-WAY SWITCHING	044-056	1	VALVE SHIFTER SHAFT
004-812	1	WIRE, R-L-B-22AWG POT F-SPADE	044-065	1	TUBING, PU CLR 0.250" O.D. 0.170" I.D.
004-814	1	WIRE, R-22AWG F-SPADE T-RING	044-065	1	TUBING, PU CLR 0.250" O.D. 0.170" I.D.
004-814	1	WIRE, R-22AWG F-SPADE T-RING	044-066	1	TUBING, PU CLR 0.250" O.D. 0.170" I.D.
004-822	1	WIRE, B-22AWG F-SPADE T-RING	044-068	1	TUBING, PU CLR 0.250" O.D. 0.170" I.D.
022-230	2	FITTING, PTC 0.25" 90° M1/8" NPT	044-073	1	BRACKET, GAUGE MOUNTING
022-231	3	FITTING, PTC 0.25" INLINE M1/8" NPT	044-095	1	TUBING, PU CLR 0.250" O.D. 0.170" I.D.
022-315	1	GROMMET, 0.88" O.D. 0.63" I.D. RUBBER			
022-875	1	VALVE, PTC 0.25" NEEDLE			
022-966	1	FITTING, PTC 0.25" 90° F1/8" NPT			

# GraverMax® G8Motor ValveAssemblyMotorValveAssembly

PART NO.	QTY.	DESCRIPTION
004-951	1	VALVE BODY, ROTARY
022-230	2	FITTING, PTC 0.25" 90° M1/8" NPT
022-948	1	O-RING, 1.078" O.D., 0.938" I.D.
022-977	1	FITTING, PTC 0.25" T M-1/8" NPT
022-990	1	WASHER, 0.63" O.D., 0.41" I.D. x 0.03" NY
044-006	1	VALVE SHROUD, ROTARY

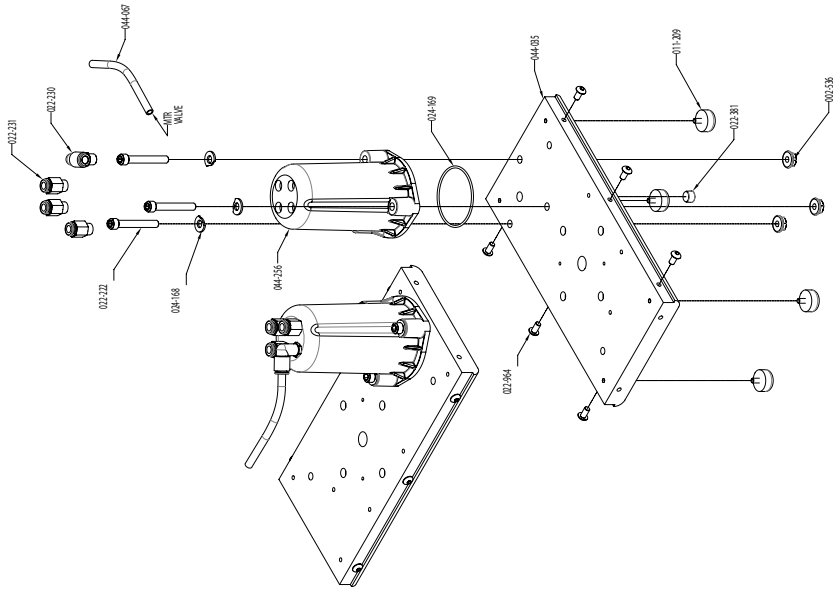
Contact GRS® or an authorized GRS® dealer for replacement parts or repairs.  
 Visit [grs.com/dealers](http://grs.com/dealers) for dealers in your country.





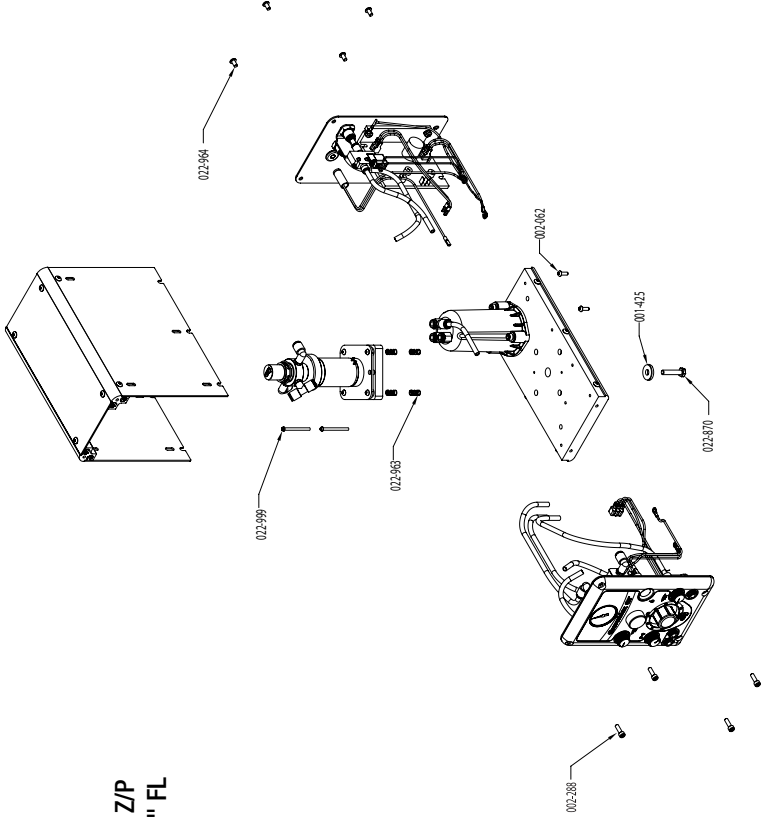
# GraverMax® G8 Base Parts List

PART NO.	QTY.	DESCRIPTION
002-536	3	NUT, 1/4"-20 FLNG LOCK Z/P
011-209	4	FOOT, #8-32 x 0.5" RUBBER
022-222	3	SOCKET HEAD CAP SCREW
022-230	1	FITTING, PTC 0.25" 90° M1/8" NPT
022-231	3	FITTING, PTC 0.25" INLINE M1/8" NPT
022-381	1	PLUG, 1/8"-27NPT x 0.25" PIPE
022-964	6	BHSCS, #10-32 x 0.38" BLK
024-168	3	SPECIAL WASHER
024-169	1	O-RING
044-035	1	PLATE, BASE FRAME
044-060	1	TANK, AIR SUPPLY
044-256	1	MOLDED AIR TANK (FOUR HOLE VERSION)



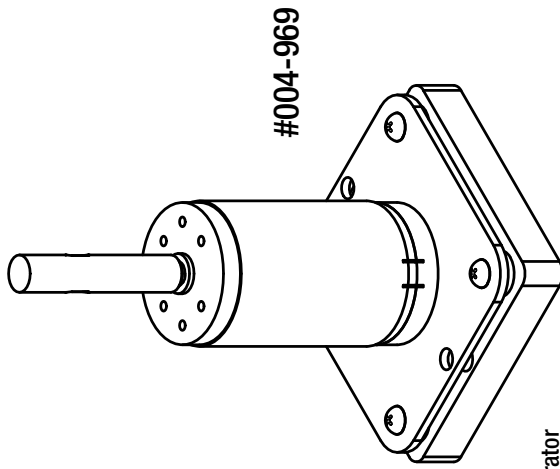
# GraverMax® G8 Box Parts List

PART NO.	QTY.	DESCRIPTION
001-425	1	WASHER
002-062	2	RHMS, #8-32 x 0.5" Z/P
002-288	4	SHCS, #10-32 x 5/8" BLK
022-870	1	HHCS, 1/4"-20 x 1.25" P-LOK Z/P
022-963	4	SPRING, COMP 0.3" O.D. 0.57" FL
022-964	4	BHSCS, #10-32 x 0.38" BLK
022-999	2	RHMS, #6-32 x 1.75" Z/P



Contact GRS® or an authorized GRS® dealer for replacement parts or repairs. Visit [grs.com/dealers](http://grs.com/dealers) for dealers in your country.

# GraverMax® G8 Motor Assembly



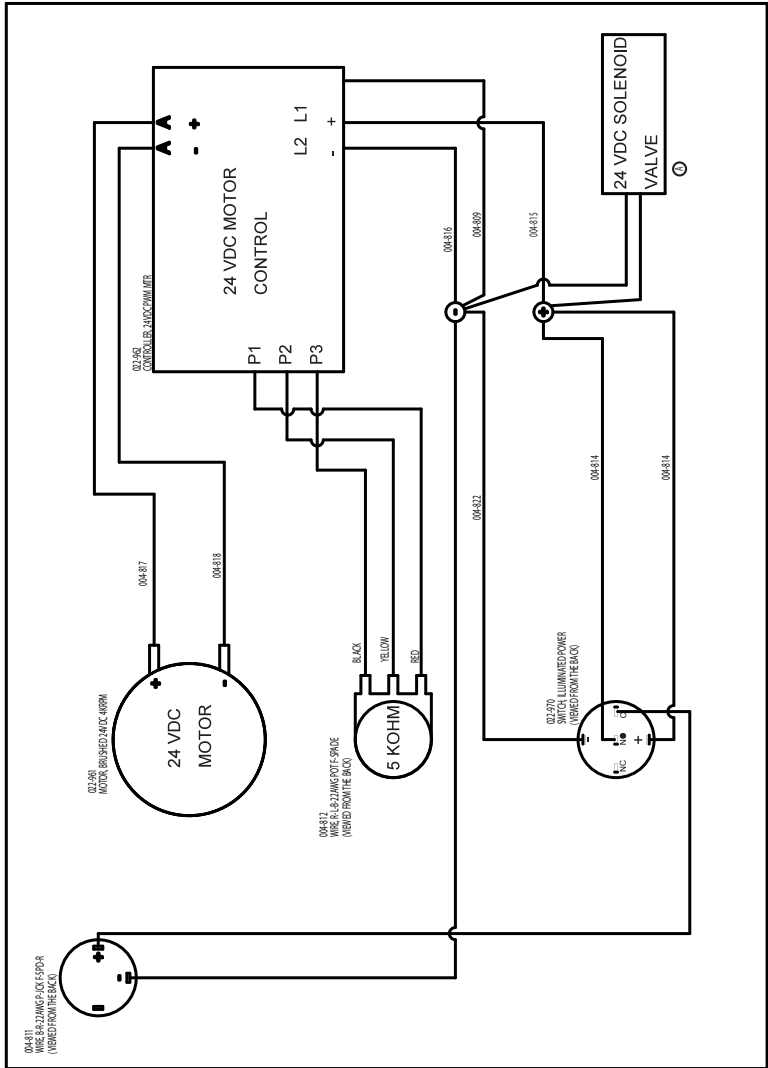
## Motor Assembly

The Motor Assembly is operator replaceable. Contact GRS® or an authorized GRS® dealer for details.

Contact GRS® or an authorized GRS® dealer for replacement parts or repairs. Visit [grs.com/dealers](http://grs.com/dealers) for dealers in your country.



# GraverMax® G8 Wiring Diagram



# GraverMax® G8 Hose Diagram

